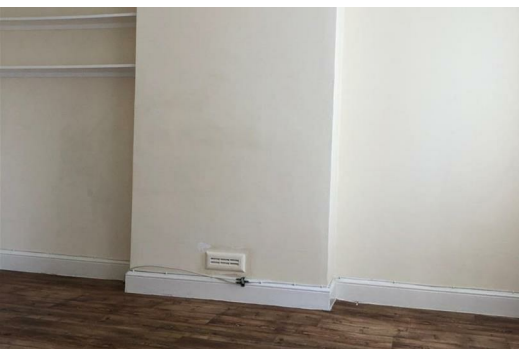




31A Aylmer Parade, Aylmer Road, London, N2 0PH

£1,450

WE ARE PLEASED TO OFFER THIS 1ST FLOOR ONE BEDROOM PROPERTY LOCATE JUST A SHORT DISTANCE FROM THE BISHOPS AVENUE & WITHIN EASY REACH OF HIGHGATE TUBE STATION. GREAT ROAD & TRANSPORT LINKS. THE PROPERTY IS AVAILABLE VERY SHORTLY & BENEFITS FROM DOUBLE GLAZING, GAS HEATING VIA RADIATORS, A SEPARATE KITCHEN WITH BUILT IN ELECTRIC OVEN & HOB & THERE'S SPACE FOR & INCLUDES A FRIDGE FREEZER & WASHING MACHINE. THE FAMILY BATHROOM IS OFF THE BEDROOM WHICH INCLUDES FITTED WARDROBES. PLEASE CALL FOR VIEWING. DSS APPLICANTS WELCOME



COMMUNAL HALLWAY

ACCESSED VIA COMMUNAL MAIN DOOR LEADING TO STAIRS TO THE 1ST FLOOR & THE PRIVATE ENTRANCE DOOR

LOUNGE

DOUBLE GLAZED WINDOWS TO FRONT WITH RADIATOR, SHELIVING TO ONE ALCOVE. ACCESS TO KITCHEN & BEDROOM

KITCHEN

DOUBLE GLAZED WINDOW TO FRONT, RADIATOR, BUILT IN OVEN & HOB. SPACE FOR & INCLUDING WASHING MACHINE & FRIDGE/ FREEZER. STAINLESS STEEL SINK & DRAINER UNIT WITH MIXER TAPS & TILED SPLAHBACKS, VINYL FLOORING FOR EASE OF MAINTENANCE.

BEDROOM

DOUBLE GLAZED WINDOW TO THE REAR WITH RADIATOR UNDER. BUILT IN STORAGE CUPBOARD HOUSING BOILER VENTED TO OUTSIDE WALL. SUBSTANTIAL AMOUNT OF BUILT IN WARDROBE & STORAGE SPACE. VINYL FLOOR FOR EASE OF MAINTENANCE & ACCESS TO FAMILY BATHROOM

FAMILY BATHROOM

DOUBLE GLAZED WINDOW TO REAR, RADIATOR, THREE PIECE SUITE IN WHITE COMPRISING A PANEL ENCLOSED BATH, PEDESTAL WASH HAND BASIN & CLOSE COUPLED W.C. VINYL FLOORING

